

REAL

V

n

C

Getting Up to Speed
with VNC Viewer

Personal Edition 4.4

Copyright and Confidentiality

Copyright Statement

Copyright © RealVNC Ltd, 2008. All rights reserved.

No part of this documentation may be reproduced in any form or by any means or be used to make any derivative work (including translation, transformation or adaptation) without explicit written consent of RealVNC.

Confidentiality Statement

All information contained in this document is provided in commercial confidence for the sole purpose of use by an authorised user in conjunction with RealVNC's products. The pages of this document shall not be copied, published or disclosed wholly or in part to any party without RealVNC prior permission in writing, and shall be held in safe custody. These obligations shall not apply to information which is published or becomes known legitimately from some source other than RealVNC.

Copyright © RealVNC Ltd, 2008. All rights reserved.

Registered office:

VNC House,
Sturton Street,
Cambridge,
CB1 2SN
United Kingdom
www.realvnc.com

Contents

Migrating to VNC Viewer 4.4.....	4
Changes to the Start menu	5
Where have the Start menu options gone?	5
Configuring VNC Viewer	6
Configuring Colour/Encoding	7
Configuring Scaling.....	8
Configuring Inputs.....	8
The Misc tab	9
The Identities tab	10
The Load/Save tab.....	10



Migrating to VNC Viewer 4.4

VNC Viewer Personal Edition 4.4 provides an updated and simplified user interface for both the server and viewer, while retaining all of the advanced settings for expert users. We hope that these changes will make VNC Viewer more helpful and easier to use.

This document aims to assist you in getting up to speed quickly with the new VNC Viewer 4.4 user interface. It will show each of the previous viewer properties tabs and the corresponding new interface.

If you have any questions regarding the new version, please do not hesitate to contact us at

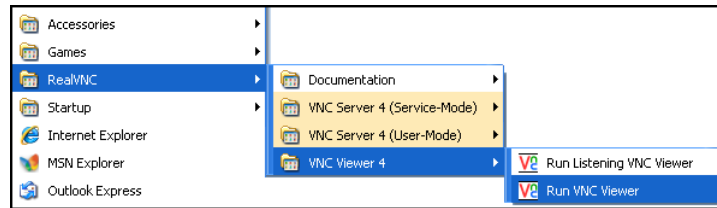
<http://www.realvnc.com/cgi-bin/support.cgi>

You will need your Customer 12digit ID number and the associated email address which was included in the confirmation email that was sent to you when you purchased the software license.

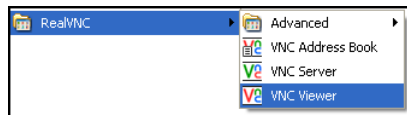
Changes to the Start menu

The first change you will notice in VNC Viewer 4.4 will be in the Windows **Start** menu.

Previously, the RealVNC Viewer entry looked like this:



The menus for VNC Viewer 4.4 have been streamlined:



Where have the Start menu options gone?

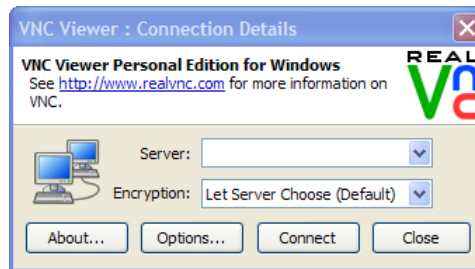
Option	Where is it?
Run VNC Viewer	VNC Viewer.
Run Listening Viewer	RealVNC → Advanced → VNC Viewer (Listening Mode).

Configuring VNC Viewer

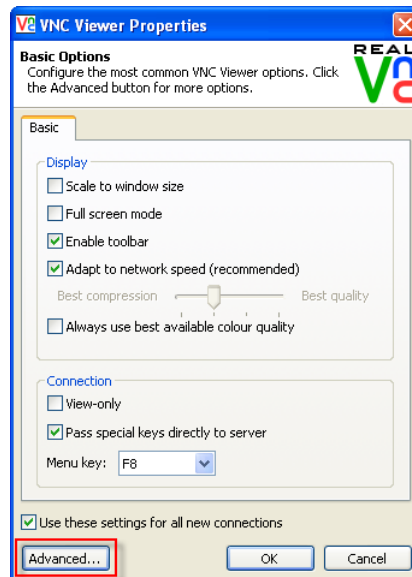
In VNC Viewer 4.4, to access the VNC Viewer configuration:

- On the **Start** menu, point to **Programs → RealVNC → VNC Viewer**

This displays the VNC Viewer: Connection Details dialog:



Click **Options** to access the VNC Viewer Properties. This will display the new VNC Viewer Properties dialog as shown below:

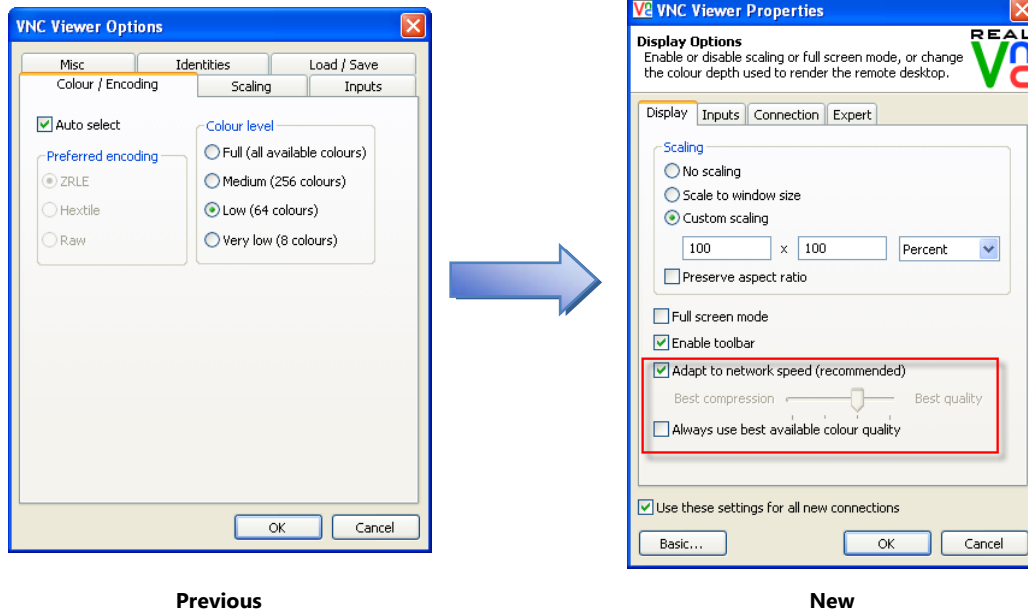


The first time that you start VNC Viewer 4.4, the VNC Viewer Properties dialog will display in *basic* mode with the most frequently used configuration options. In order to display all of the available configuration options, click the **Advanced** button. (To switch back to basic mode, click the **Basic** button at any time).

THIS GUIDE WILL ASSUME THAT YOU ARE WORKING IN ADVANCED MODE.

Configuring Colour/Encoding

In previous versions of VNC Viewer, the VNC Viewer Properties dialog opened to the *Colour/Encoding* tab:



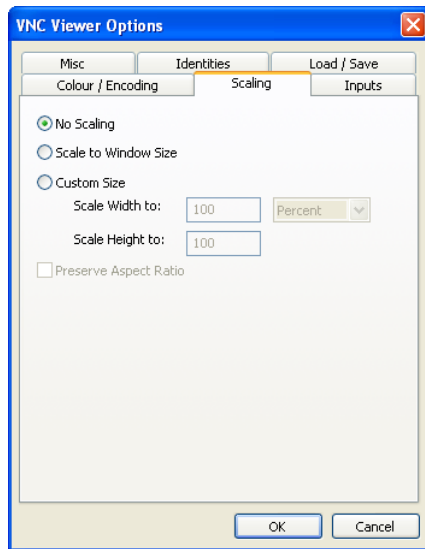
By default, in VNC Viewer 4.4, the VNC Viewer Properties dialog now opens to the *Display* tab, and the Colour settings can be found on the same page, as highlighted above in red.

The table below summarises where the other *Colour & Encoding* viewer options can be found:

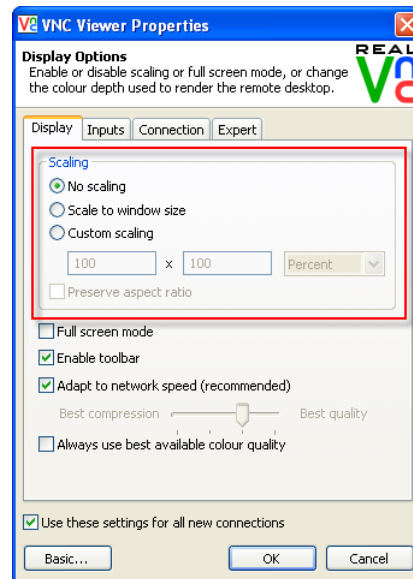
Previous colour option	New Display tab options
Auto-select	Adapt to network speed.
Preferred encoding	
ZRLE	Expert tab → <i>PreferredEncoding</i> → ZLRE
Hextile	Expert tab → <i>PreferredEncoding</i> → Hextile
Raw	Expert tab → <i>PreferredEncoding</i> → Raw
Colour level	
Full (all available colours)	Expert tab → <i>ColourLevel</i> → 3
Medium (256 colours)	Expert tab → <i>ColourLevel</i> → 2
Low (64 colours)	Expert tab → <i>ColourLevel</i> → 1
Very low 8 colours	Expert tab → <i>ColourLevel</i> → 0

Configuring Scaling

In previous versions of VNC Viewer, scaling options were managed on the *Scaling* tab. The options have remained the same but they are now managed on the *Display* tab:



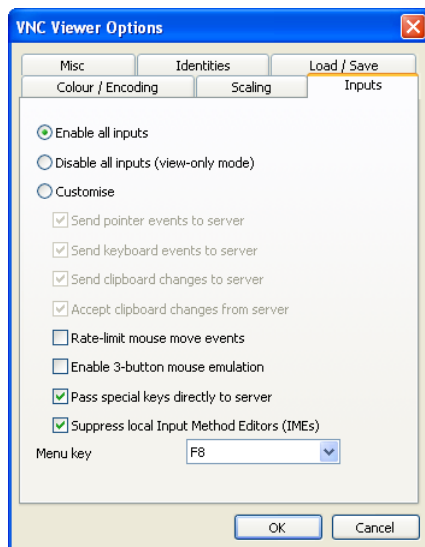
Previous



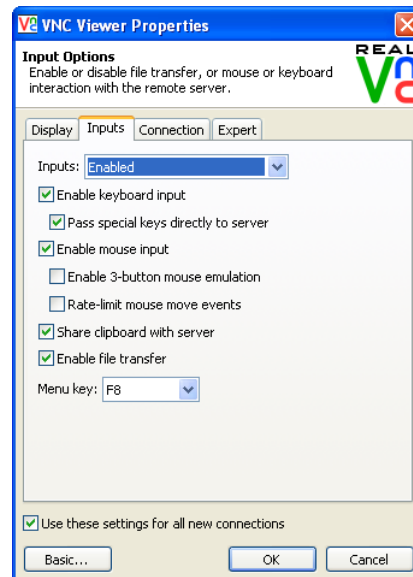
New

Configuring Inputs

As in version 4.3, input options are managed on the *Inputs* tab. The options have mostly remained the same with some minor re-naming:



Previous



New

The table below summarises where the *Input* options can be found in VNC Viewer 4.4 and associated option re-naming:

Previous Input option	New input options
Enable all inputs	Inputs drop-down box → <i>Enabled</i>
Disable all inputs (view only mode)	Inputs drop-down box → <i>Disabled</i>
Customise	Inputs drop-box → <i>Custom</i>
Send pointer events to server	Enable mouse input.
Send keyboard events to server	Enable keyboard input.
Send clipboard events to server	Share Clipboard with server.
Accept clipboard events from server	
Rate-limit mouse move events	<i>No Change.</i>
Enable 3-button mouse emulation	<i>No Change.</i>
Pass special keys directly to server	<i>No Change.</i>
Suppress local Input Method Editors (IMEs)	Expert tab → <i>SuppressIME</i> → True
Menu key	<i>No Change</i>

The Misc tab

The *Misc* tab from VNC Viewer 4.3 has been removed; the table below shows where the options can be found in VNC Viewer 4.4

Misc tab options	VNC Viewer 4.4
Shared connection (do not disconnect other viewers)	Connection tab.
Full-screen mode	Display tab.
Full-screen mode matches server resolution	Expert tab → <i>FullScreenChangeResolution</i> → True
Full-screen mode uses all monitors	Expert tab → <i>UseAllMonitors</i> → True
Render cursor locally	Expert tab → <i>UseLocalCursor</i> → True
Allow dynamic desktop resizing	Expert tab → <i>UseDesktopResize</i> → True
Only use protocol version 3.3	Expert tab → <i>Protocol3.3</i> → True
Beep when requested to by the server	Expert tab → <i>AcceptBell</i> → True
Offer to automatically reconnect	Expert tab → <i>AutoReconnect</i> → True
Try Single sign-On if server allows it	Connection tab → Use single sign-on if the VNC Server supports it.
Enable file transfer	Inputs tab

The Identities tab

The VNC Viewer 4.3 *Identities* tab has been removed.

The Load/Save tab

The VNC Viewer 4.3 *Load/Save* tab has been removed and the functionality has moved to the viewer desktop. In VNC Viewer 4.4, to save your settings as the default for all future connections, on the *Inputs* tab, click **Use these settings for all new connections**.

